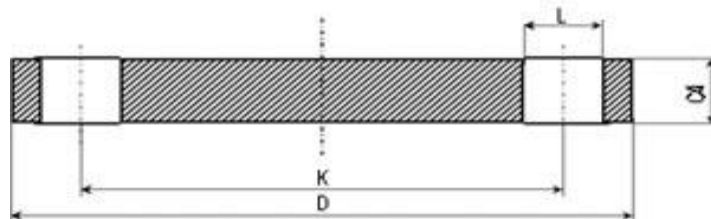




Kołnierze zaślepiające typ05 wg PN-EN 1092-1 PN40



DN	D	C4	K	Liczba	Wielkość	L	Waga
10	90	16	60	4	M12	14	0,722
15	95	16	65	4	M12	14	0,813
20	105	18	75	4	M12	14	1,14
25	115	18	85	4	M12	14	1,38
32	140	18	100	4	M16	18	2,03
40	150	18	110	4	M16	18	2,35
50	165	20	125	4	M16	18	3,20
65	185	22	145	8	M16	18	4,29
80	200	24	160	8	M16	18	5,54
100	235	24	190	8	M20	22	7,60
125	270	26	220	8	M24	26	10,80
150	300	28	250	8	M24	26	14,60
200	375	36	320	12	M27	30	28,80
250	450	38	385	12	M30	33	44,40
300	515	42	450	16	M30	33	64,20
350	580	46	510	16	M33	36	89,50
400	660	50	585	16	M36	39	127,0
450	685	57	610	20	M36	39	154,0
500	755	57	670	20	M39	42	188,0
600	890	72	795	20	M45	48	331,0