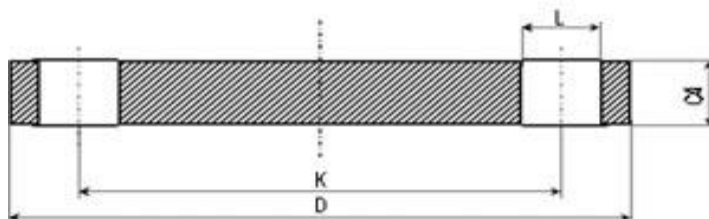




Kołnierze zaślepiające typ05 wg PN-EN 1092-1 PN16



DN	D	C4	K	Liczba	Wielkość	L	Waga
10	90	16	60	4	M12	14	0,722
15	95	16	65	4	M12	14	0,813
20	105	18	75	4	M12	14	1,14
25	115	18	85	4	M12	14	1,38
32	140	18	100	4	M16	18	2,03
40	150	18	110	4	M16	18	2,35
50	165	18	125	4	M16	18	2,88
65	185	18	145	8	M16	18	3,51
80	200	20	160	8	M16	18	4,61
100	220	20	180	8	M16	18	5,65
125	250	22	210	8	M16	18	8,13
150	285	22	240	8	M20	22	10,50
200	340	24	295	12	M20	22	16,20
250	405	26	355	12	M24	26	25,00
300	460	28	410	12	M24	26	35,10
350	520	30	470	16	M24	26	48,00
400	580	32	525	16	M27	30	63,50
450	640	40	585	20	M27	30	96,60
500	715	44	650	20	M30	33	133,0
600	840	54	770	20	M33	36	226,0